



Main Headquarters, Engineering and Manufacturing facility in Lincolnshire Illinois, just north of Chicago



European Headquarters, Engineering and Manufacturing facility in Birmingham, England



Innovation and Technology Center in Vernon Hills, Illinois, just north of Chicago



Asian/Pacific headquarters, precision machining and manifold assembly facility in Changzhou, China, near Shanghai.



**HYDRAFORCE**

Visit our website: [www.hydraforce.com](http://www.hydraforce.com)

**HYDRAFORCE INC**

500 Barclay Blvd.  
Lincolnshire, IL 60069  
Tel: +1 847 793 2300  
Fax: +1 847 793 0086

Member: National Fluid Power Assoc.  
ISO 9001

**HYDRAFORCE INDIA LLC**

Vatika Business Centre  
Suite No. 22, Level 5, C Wing  
Techpark One, Airport Road  
Yerwada, Pune 411006  
Maharashtra, India  
Tel: +91 020 40111304  
Fax: +91 020 40111105  
Email: [sales-uk@hydraforce.com](mailto:sales-uk@hydraforce.com)

**HYDRAFORCE HYDRAULICS LTD**

ADVANCED MANUFACTURING HUB  
250 Aston Hall Road  
Birmingham B6 7FE  
United Kingdom  
Tel: +44 121 333 1800  
Fax: +44 121 333 1810

Member: British Fluid Power Assoc. and  
Verband Deutscher Maschinen- und Anlagenbau  
e.V. (VDMA) ISO 9001 & ISO 14001

**HYDRAFORCE HYDRAULICS LTD**

Prager Ring 4-12  
D-66482 Zweibrücken, Germany  
Tel: +49 6332 79 2350  
Fax: +49 6332 79 2359

Email: [Sales-Germany@hydraforce.com](mailto:Sales-Germany@hydraforce.com)  
Member: Verband Deutscher Maschinen- und  
Anlagenbau e.V. (VDMA)

**HYDRAFORCE HYDRAULIC SYSTEMS (CHANGZHOU) Co., LTD**

388 W. Huanghe Road, Building 15A  
GDH Changzhou Airport Indl Park  
Xinbei District  
Changzhou, China 213022  
Tel: +86 519 6988 1200  
ISO 9001

**HYDRAFORCE JAPAN LLC**

3-17-42-2F Shimoochiai Shinjuku  
Tokyo, Japan 161-0033  
Tel: +81 3 3565 6234  
Email: [shinyak@hydraforce.com](mailto:shinyak@hydraforce.com)

**HYDRAFORCE KOREA LLC**

A-506, Bupyeong, Woorim Lions Valley  
283 Bupyeong-daero, Bupyeong-gu  
Incheon, Korea 21315  
Tel: +82 32 623 5818  
Fax: +82 32 623 5819  
Email: [gab-seokJ@hydraforce.com](mailto:gab-seokJ@hydraforce.com)

HydraForce, Inc. (USA): DUNS #13-120-1493; FSCM  
#005K6 Fed. Tax #36-3555856 ISO 9001

HydraForce India LLC (India): Foreign Company  
Registration Number F04941

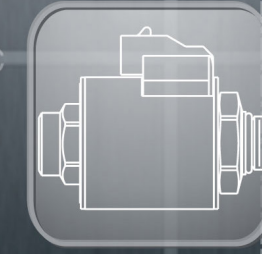
HydraForce Hydraulics Ltd. (U.K.): Reg. in Cardiff.; Reg.  
No. 2286591 ISO 9001 and ISO 14001

**RoHS**  
COMPLIANT

HydraForce valve and manifold products comply with the European Council and Parliament RoHS directive 2002/95/EC limiting the use of hazardous substances. For all other products, consult factory.

# HYDRAFORCE

POWER FORWARD



## Electro Hydraulic CONTROL SOLUTIONS

## for Material Handling

# TABLE OF CONTENTS

The material handling industry encompasses a variety of vehicles and machines that specialize in efficient lifting, rapid transport, and accurate placement of goods and materials of all sizes, shapes, and weights. Telehandlers and fork lifts are the mainstays of this industry, operating indoors in factories and warehouses, or outdoors on farms and construction sites. Safe lifting of materials and safety for the operator are paramount in this field and new safety regulations are requiring redesign of equipment.

There are many opportunities to improve the control, efficiency and safety of material handling equipment through the use of hydraulic cartridge valves.

**Disclaimer:** The content of this document implies no warranty of merchantability or fitness for a particular purpose. This information provides technical illustration only and is not a statement of suitability for any particular application. Each application is unique and we advise you to conduct your own tests and studies to determine the fitness of our products for your application.

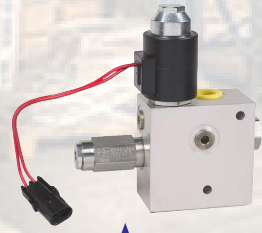
## Full System Controls.....Pages 14-15

- Electronics
- Integrated with Hydraulics



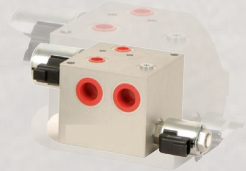
## Steering and Brakes.....Pages 12-13

- Steering
- Brakes
- Traction control



## Transmission and Cooling.....Pages 10-11

- Traction control
- Fan drive solutions
- Sensing options

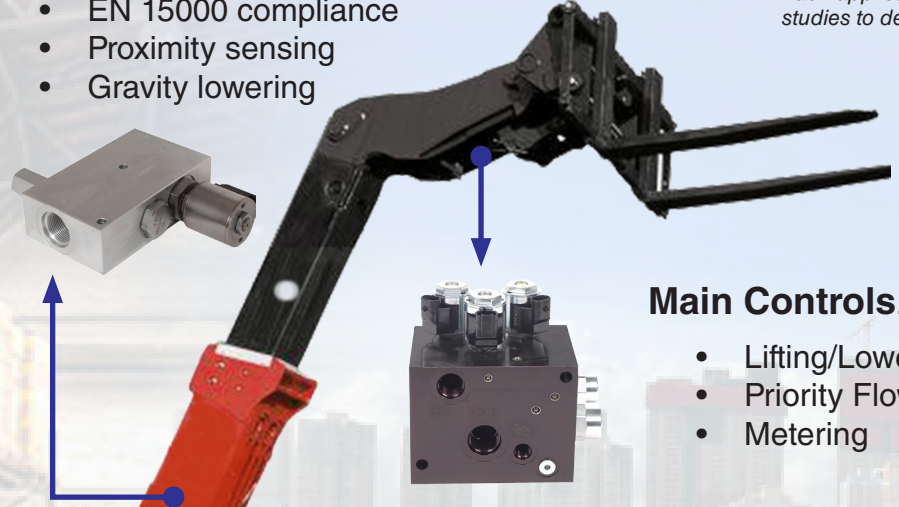


## Forklifts - Overview.....Pages 6-7

- Attachments
- Gravity lowering
- Load sensing

## Telehandlers - Overview.....Pages 4-5

- EN 15000 compliance
- Proximity sensing
- Gravity lowering



## Main Controls.....Pages 8-9

- Lifting/Lowering
- Priority Flow/Flow Sharing
- Metering

## The HydraForce Difference.....Page 16-17

- Highest quality guaranteed
- Speed to market
- Flexible and responsive
- Focused on cartridge valve innovation since 1985
- Leading edge technology

## Our Story.....Page 18-19

- Vision and Mission
- Quality and Manufacturing Guarantee
- HydraForce Timeline
- Worldwide Support



# TELEHANDLERS - OVERVIEW

**EN 15000 Compliance**  
**Proximity Sensing**  
**Gravity Lowering**

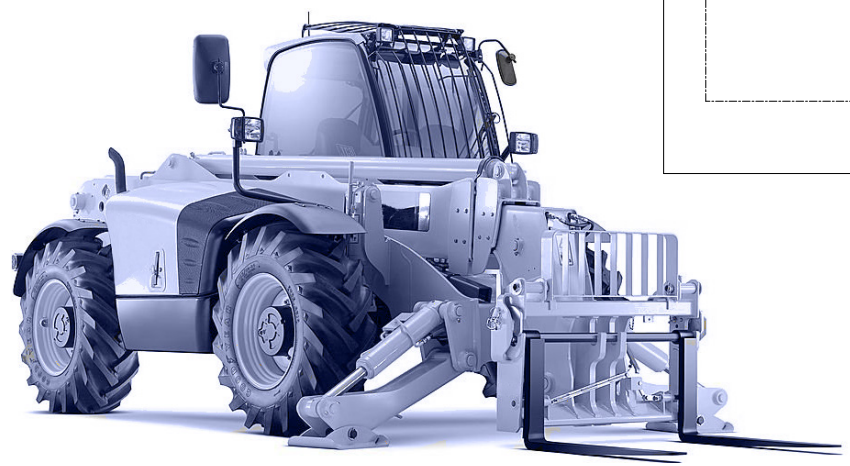
Telescopic handlers, or telehandlers for short, come in an amazing array of sizes, shapes, weights and heights, depending on the type of material they need to lift and carry. There are trends for telehandlers to reach higher, lift faster, use less fuel, hold more load, turn sharper corners, fit in tighter work spaces, and meet stricter safety regulations. Many telehandlers are equipped with four-wheel drive, so they need good traction and steering control, especially if travelling on rough or uneven ground.

Hydraulic cartridge valves may be small and compact, but they play a large role in accomplishing more efficient and responsive control of the tallest of telehandlers.



### Safety without compromise . . .

European safety standard EN 15000, introduced in 2010, requires material handling machines to automatically reduce speed before unloading to ensure stability. HydraForce multi-function cartridge valves can accomplish this without compromising performance.



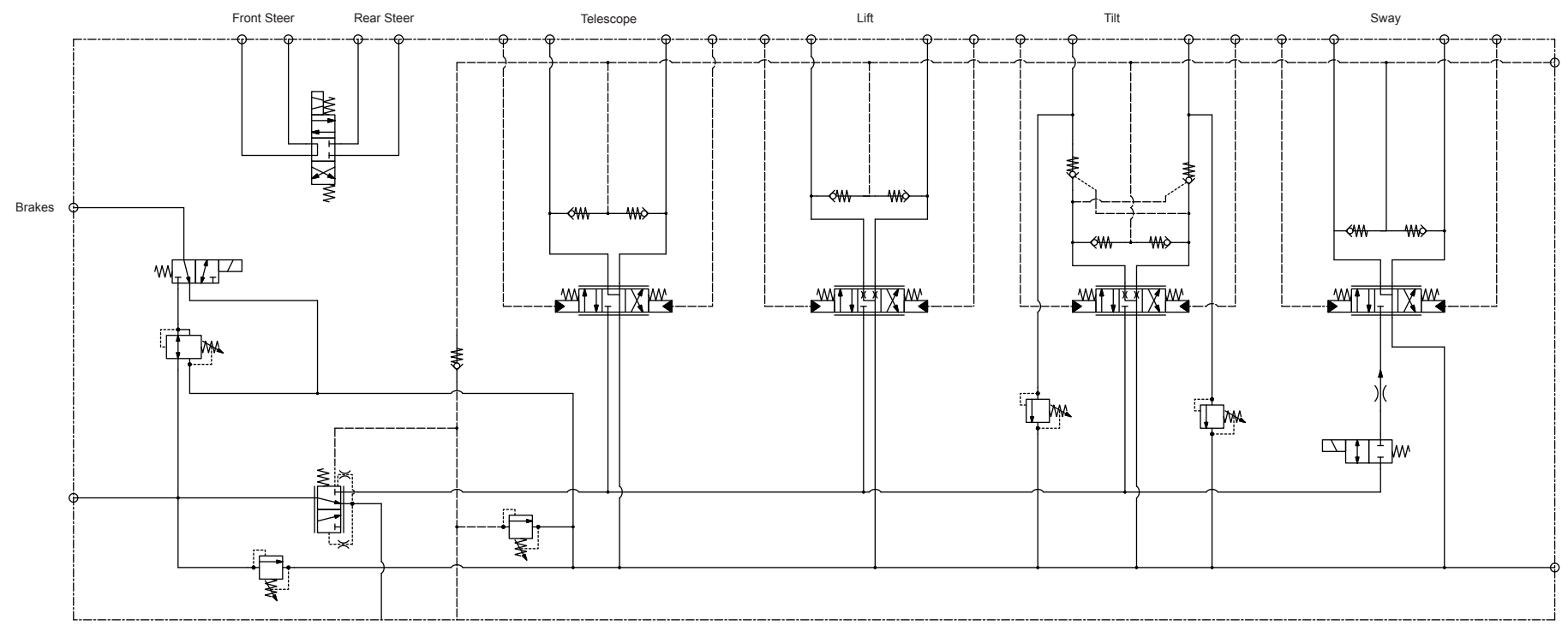
### Control options from top to bottom . . .

From stabilizing and steering to telescoping the boom and holding the load, hydraulic cartridge valves work on every level in the telehandler market.

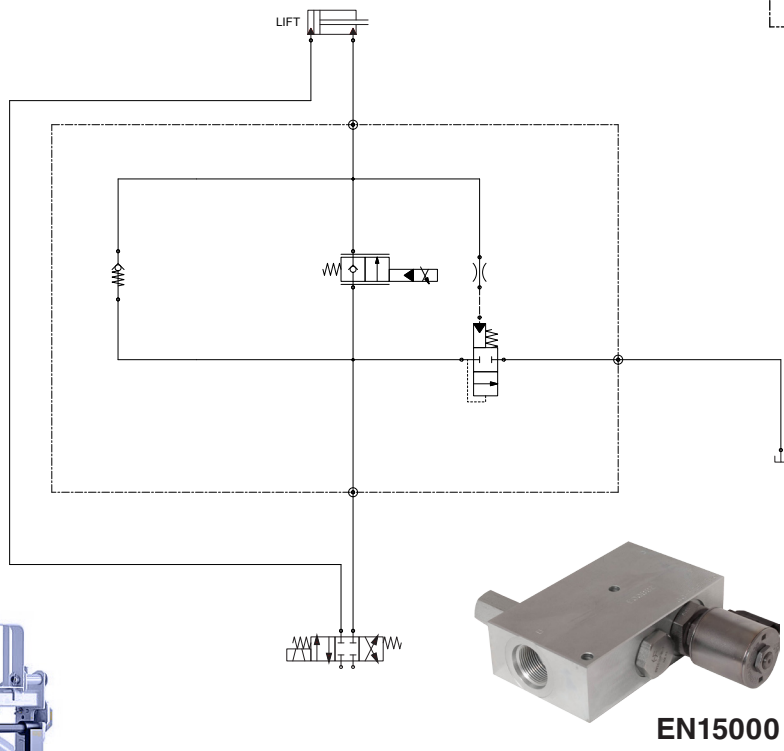
Piloted directional control valves provide cost-effective control of telescoping, lift, and sway functions. The pilot is controlled from the joystick in the cab.

These spring-centered electroproportional cartridge valves are available in several sizes and flow rates and can be further customized with several choices of spring-centered, symmetrical spools capable of meter-in/meter-out control. The lower flow tilt and sway functions make use of smaller sized valves, while the higher flow telescoping and lift functions use larger sized valves.

The circuit at right shows how piloted directional valves can be configured. It also shows a load-sense system designed to work with a load-sensing pump, brake charging with an accumulator, and priority steering.

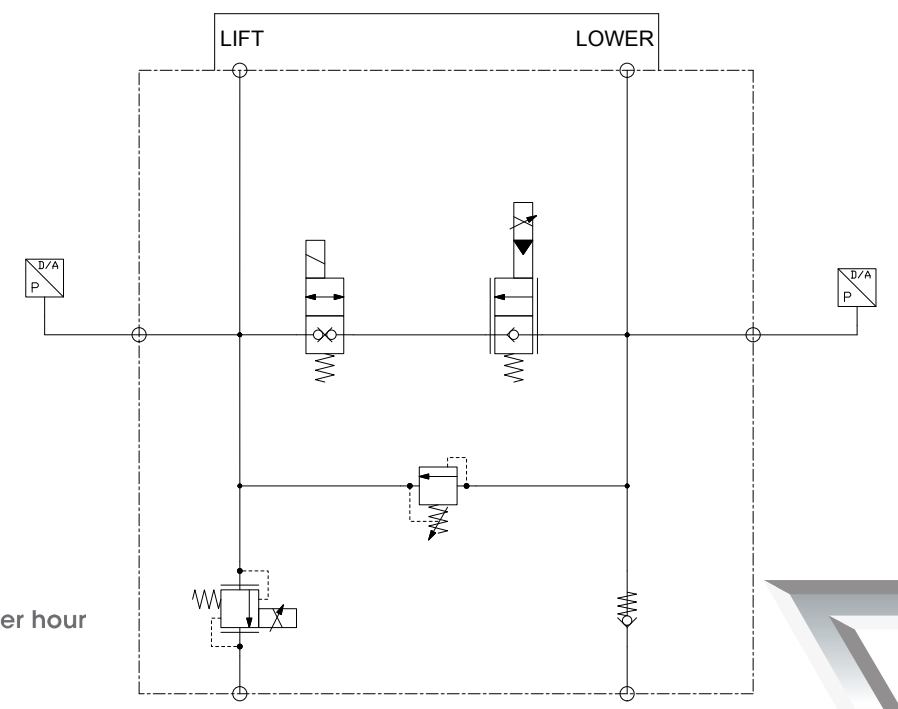


From brakes and steering to telescoping the boom and holding the load, hydraulic cartridge valves work on every level in the telehandler market.



### Gravity lowering . . . an efficient alternative

Gravity lowering, or using the force of nature for load-lowering rather than engine power, is another trend that is helping telehandlers save fuel and improve efficiency. This gravity-lowering circuit for a telehandler needs no pump output for lowering and regeneratively increases the speed of other machine functions. This innovative approach has saved one gallon of fuel per hour in some applications.



# FORKLIFTS - OVERVIEW

## Attachments Gravity Lowering Load Sensing

The term, "fork lift truck" is almost a misnomer, as today's material handlers use a wide range of attachments to handle loads of any size, shape, temperature, and weight. Clamps or arms, rather than forks, are used for awkward loads, such as crates, bales or tires.

Powering and control of these attachments are ideal applications for compact hydraulic cartridge valves that can accommodate a range of flow rates and operating pressures. They also have the flexibility to locate controls on the attachment itself, simplifying the vehicle's main systems when attachments are not in use. Electronic control can further enhance position and load-sensing for material handling attachments.

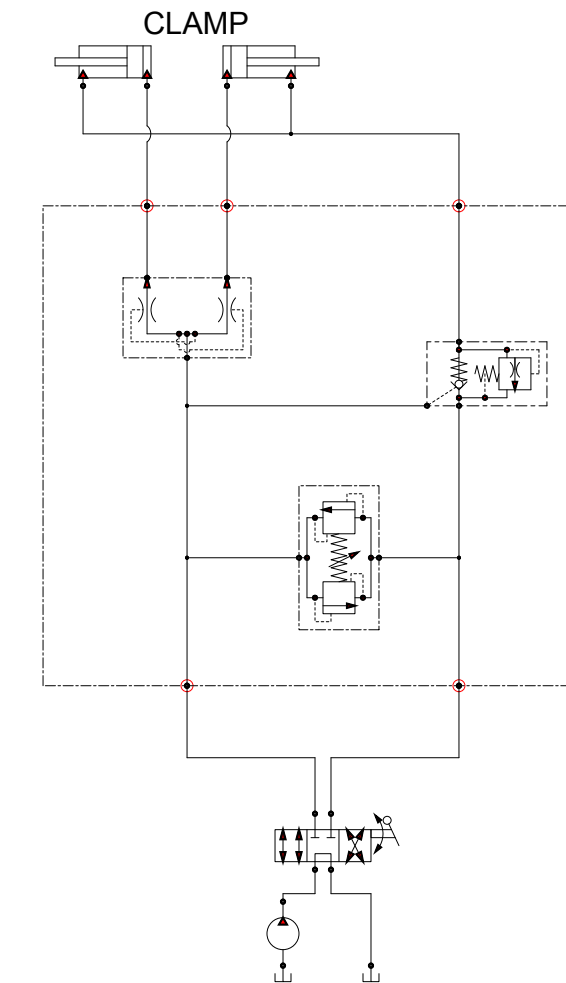
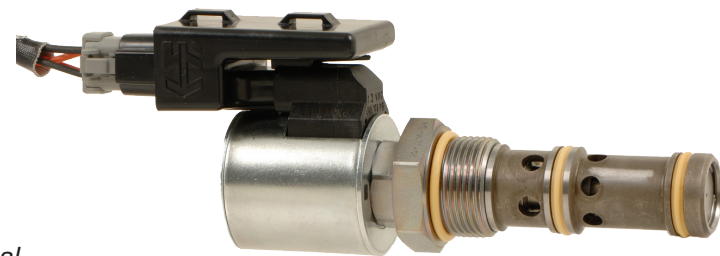


### Flexible, Simple and Low Cost Control

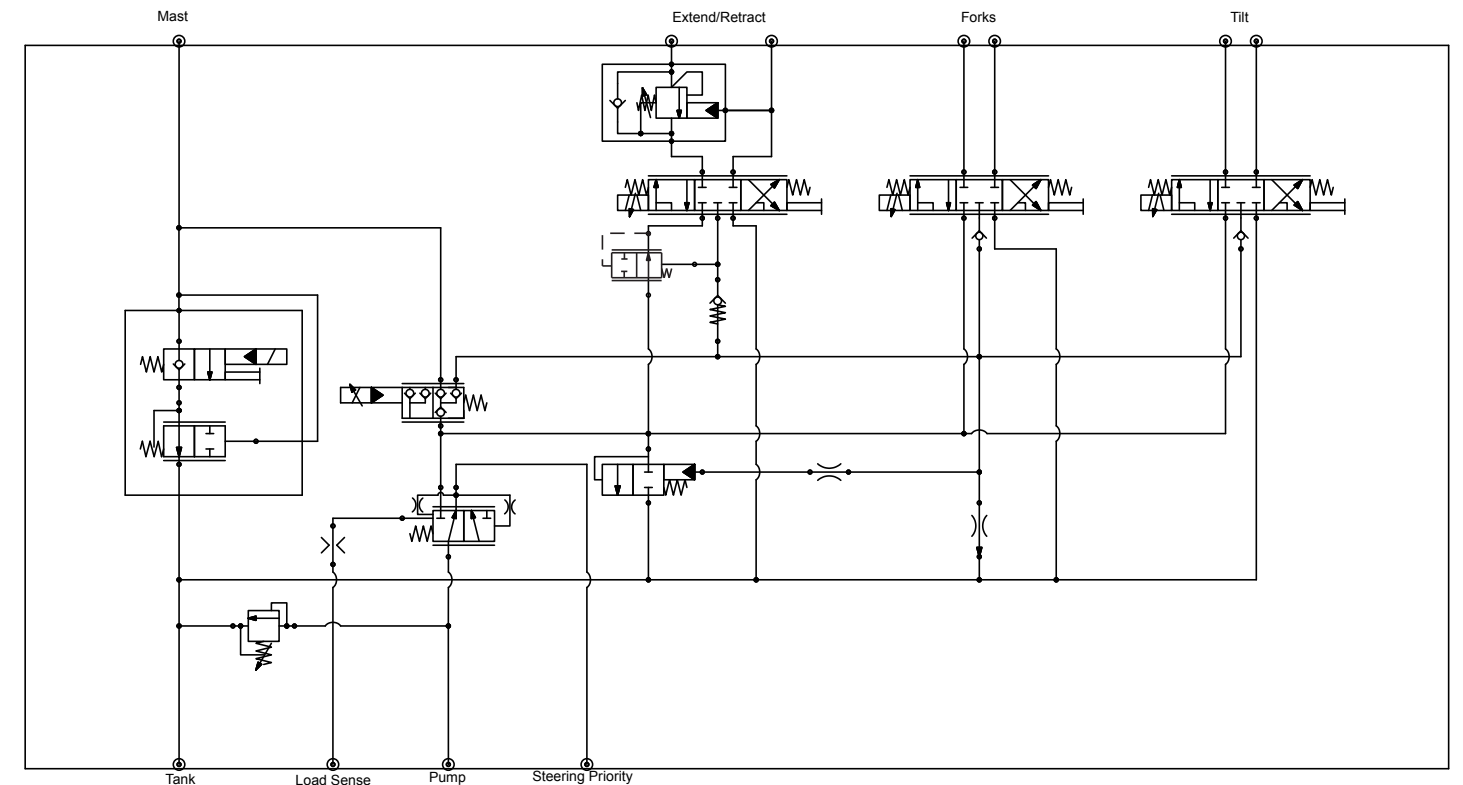
Plug-in valve drivers, such as the HydraForce EVDR-0101A and EVDR-0201A provide flexible and self-contained control for material handling attachments. If only one more output is needed, use the EVDR-0101A. For one or two inputs or outputs, the EVDR-0201A can be used.

These controllers plug directly in to an electro-proportional valve and respond well to an independent voltage, current or resistance signal. They are a simple, low cost way to enhance the control of a hydraulic function.

Fan, transmission, and custom-configurable models of the EVDR valve drivers are available.



This circuit shows how you can control a carton clamp attachment. It uses a flow divider combiner to maintain equal pressure on both arms of the clamp.



This circuit for a three-wheel electric counterbalance truck uses the force of gravity for lowering rather than hydraulic pump pressure, which saves energy and fuel. A previous manifold required pilot pressure to activate the lower spool.

This circuit used HydraForce multi-function SPCL valves for fast "closing" response. When the operator releases the joystick to stop the motion of the forks, they stop immediately. These valves also helped reduce the size of the manifold.

Multi-Function Valve  
Regulates Flow While  
Load-Holding



# MAIN CONTROLS

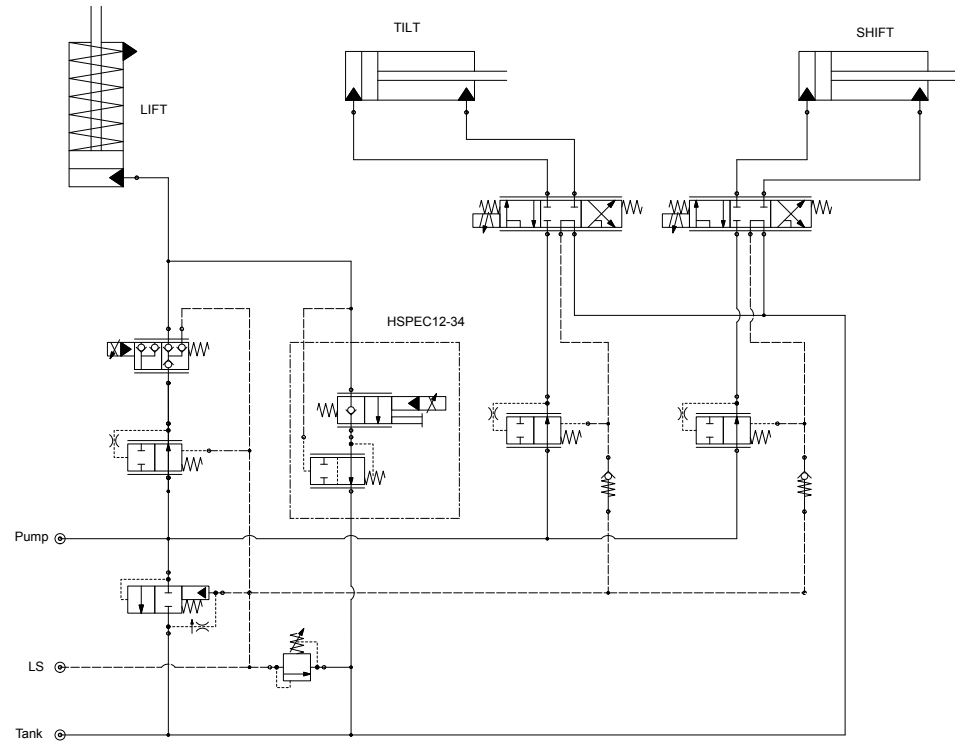
Lifting/Lowering  
Metering  
Priority Flow  
Flow Sharing

Multi-function valves are gaining popularity for use on the main controls of telehandlers and forklifts, thanks to their flow sharing and load holding capabilities. Main control functions include boom lift, tilt and load-holding.

Flow sharing is desirable whenever a machine needs to operate multiple work functions simultaneously.

Load holding with precise and stable flow control is especially desirable for material-handling equipment. Multi-function valves can be used to provide a choice between power-down and gravity-assisted lowering of the boom. By using the boom's structurally induced load pressure, the multi-function cartridge valve harnesses the natural force of gravity to provide smooth, stable lowering.

## Main Control for Forklifts



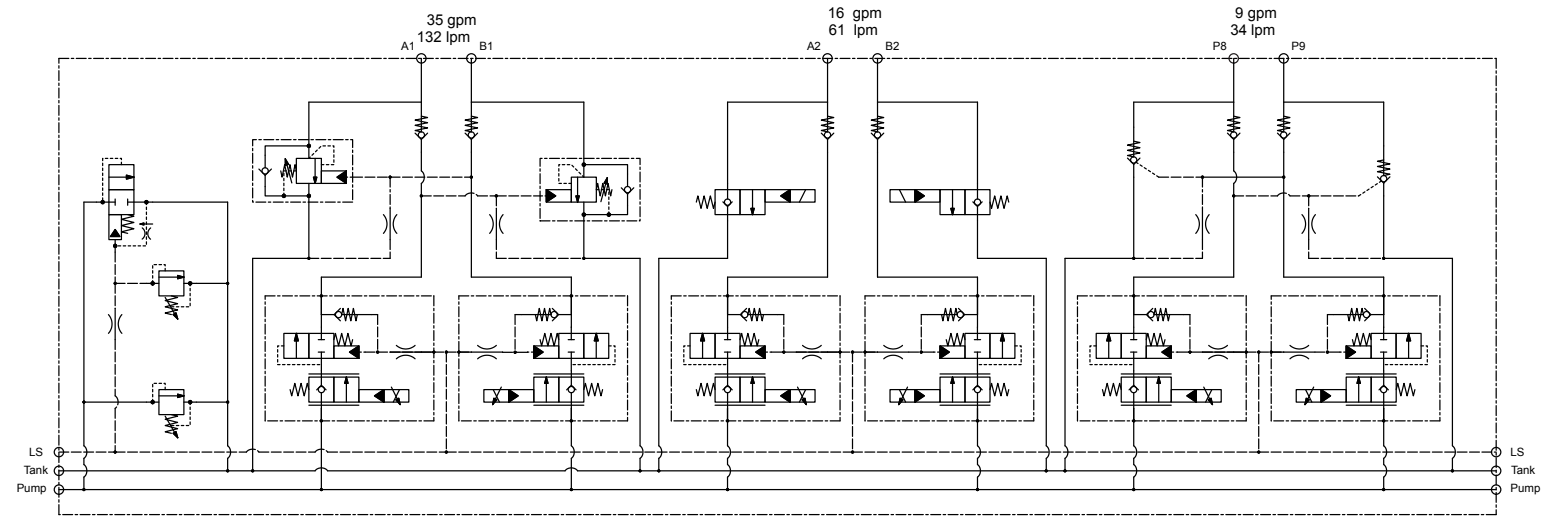
This schematic shows a typical application for a single-acting lift cylinder. Multi-function HSPECxx-34 valves are used for the lowering function of this circuit.



**ACCELERATE RETRACTION** 50% faster boom retraction

## Bridging the Gap

Bridge circuits provide superior motion control performance by coupling flow-controlled meter-in with pressure controlled meter-out. Hydraulic flow is effectively shared between all functions with the use of HydraForce HSPECxx-30 valves. This feature enables more responsive and more flexibly packaged motor and cylinder control with post pressure compensation and a superior degree of controllability than other directional control options can provide.

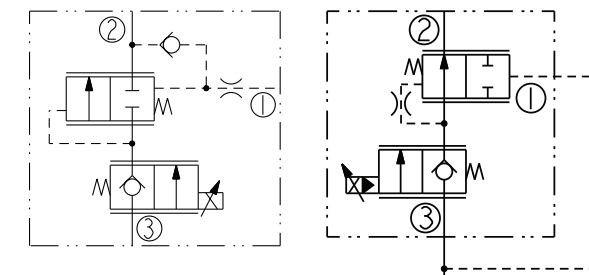


## The New HSPEC Family

The new HSPEC family of multi-function cartridge valves ensures scalable flow capacity and precise control. With three sizes and flow rates to choose from, the HSPEC valve offers design flexibility for proper control of position and pressure.

HSPECxx-30 valves have a built-in post-compensator and load-sense valve, which enables more compact and efficient directional control packages. They come in several sizes and flow rates from 34 to 98 lpm (9 to 26 gpm).

HSPECxx-34 valves combine a proportional lowering valve with a pressure compensator and are ideal for lifting and lowering control of single-acting cylinders. When combined with the HSPECxx-30 valves, you can create a compact, cost-effective flow-sharing circuit that enables efficient use of available horsepower while offering controlled load lowering.



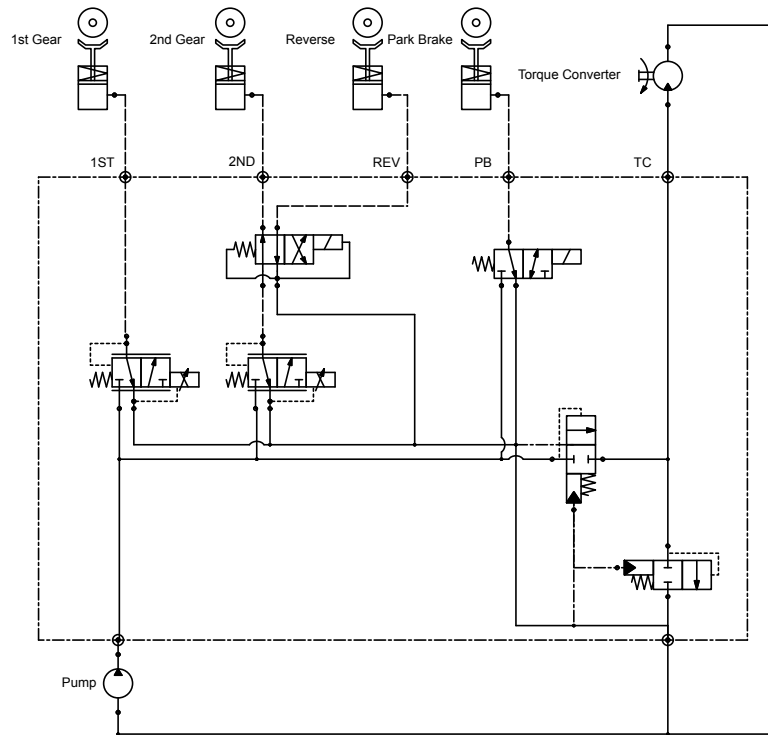
# TRANSMISSION AND COOLING

## Traction Control Fan Drive Solutions Sensing Options

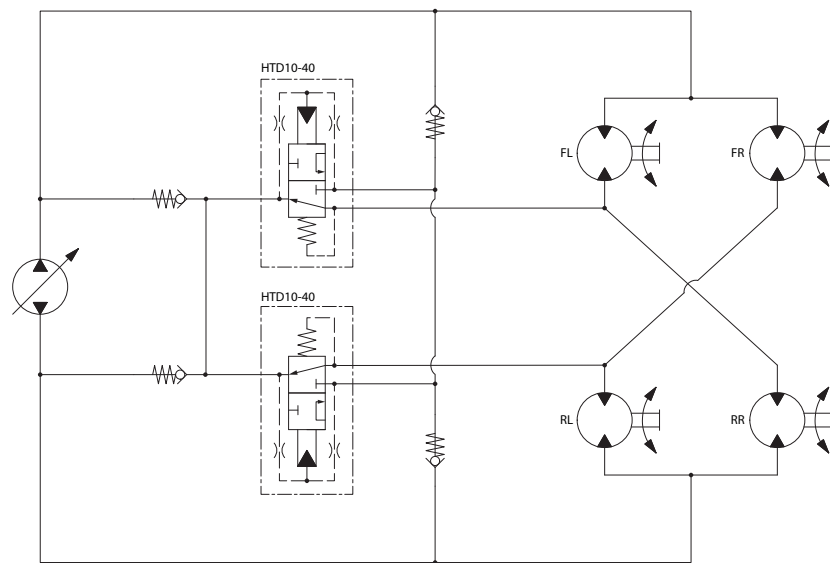
Hydraulic cartridge valves can be applied in ways that not only save energy but also provide better control of traction. In material transport, wheel slippage can be a problem, particularly with heavy loads on rough terrain.

One solution is a series-parallel hydrostatic drive with the HydraForce HTD10-40 torque divider. This pressure reducing/relieving valve adjusts its setting to half the inlet pressure, achieving efficient torque division regardless of differing motor speeds.

Fan drive systems match fan speed to cooling demand, saving energy and space. Compact fan drives can be reversible to help keep radiators clean.



A typical two-speed transmission for a telehandler

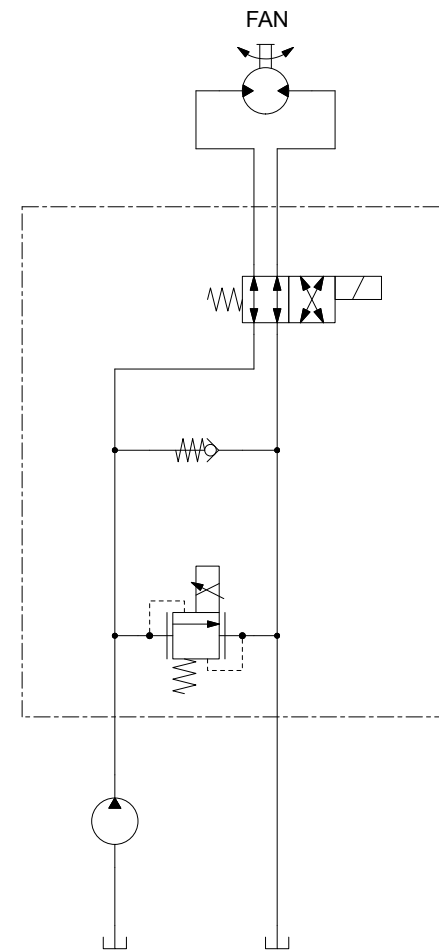


Four wheel drive series-parallel crossover with torque dividers for a telehandler

### Fan Drive Solutions

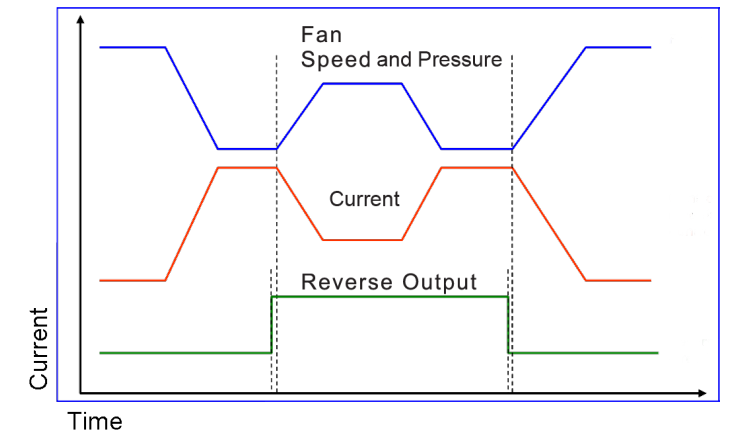
A small flow from the vehicle's hydraulics can operate a variable speed/reversible fan drive. Temperature sensors and proportional valves match fan power to cooling demand offering significant horsepower savings.

This proportional fan drive circuit includes a number of valuable features. The fan is reversible for radiator cleaning. Relief valves and anti-cavitation checks protect the motor from stalling and overrunning. And a pressure reducing/relieving valve coupled with temperature sensors forms the fail-safe speed control. This circuit operates even with a complete loss of signal. This system is compatible with load-sensing hydraulics.

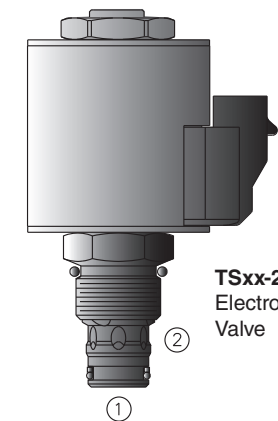


A basic fan circuit for a telehandler

### Fan Output Performance



Control valves with multiple temperature inputs can be used to provide variable fan speed control depending on air temperature, load and cooling requirements. If the radiator gets clogged, the electro-proportional valves can automatically reverse fan direction.

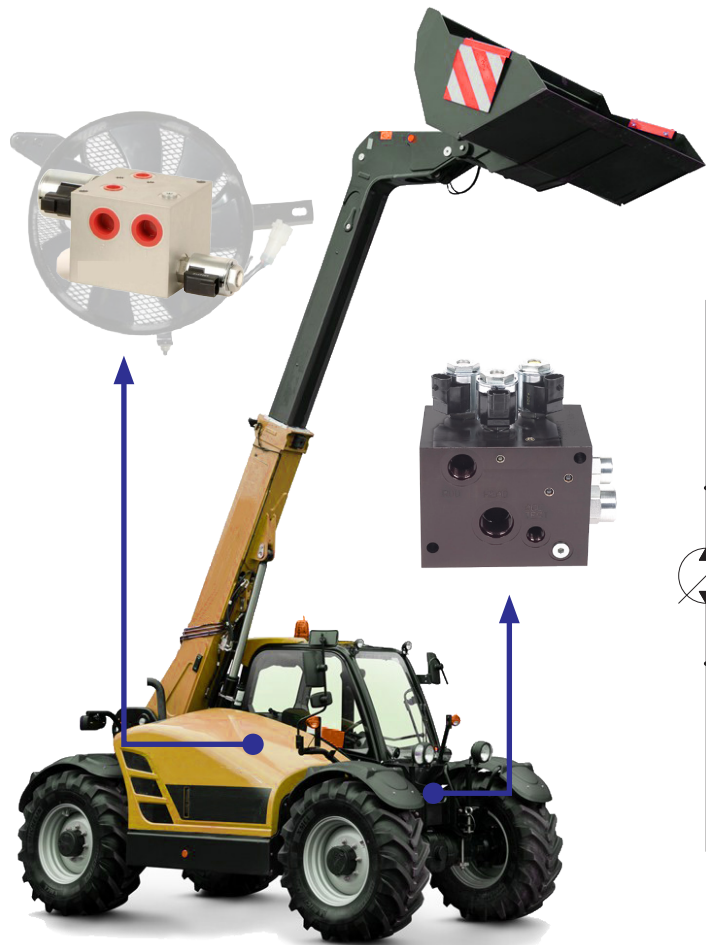


TSxx-27  
Electro-proportional  
Valve

ERT 120  
Temperature Sensor



The HydraForce ERT120 sensor is designed for use in demanding industrial applications. It can sense temperatures from -40 to 150° C (-40 to 300°F) and has a padded resistor for improved linearity of the input curve.



# STEERING AND BRAKES

## Steering Brakes Traction Control

Steering and braking are the most important functions on on material handling equipment, and as such, they have priority over all other hydraulic demands.

HydraForce manufactures a range of priority, on-demand pressure compensators with dynamic load sensing for fast response. Priority control circuits often utilize one or more accumulators to store hydraulic energy for use upon demand.

### Primary Steering and Brake Solution

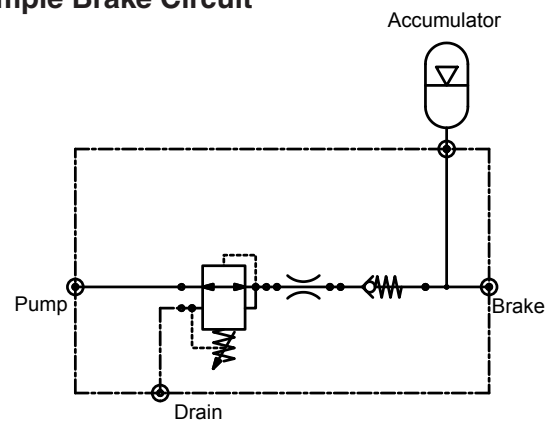
A typical circuit provides priority flow for steering while maintaining a predetermined range of pressure in the accumulator/s to ensure an adequate supply of oil to pump the brake seven times in the case of a loss of power.

If one accumulator fails, a load shuttle valve shifts over to protect the operational one. A pressure compensator valve provides priority flow in the required amount while allowing excess flow for auxiliary functions.

### Better Braking

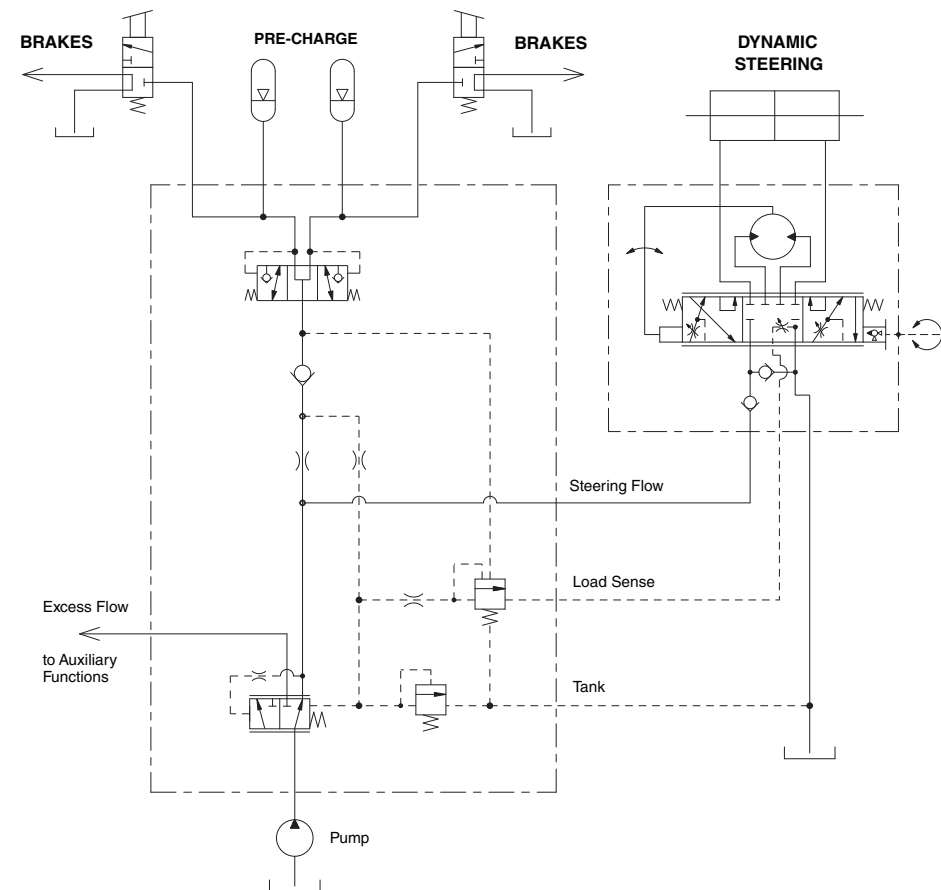
A simple brake circuit provides reduced pressure to power off the brakes. An alternative brake circuit includes a hand pump that can be used for emergency pumping of the brake.

### Simple Brake Circuit

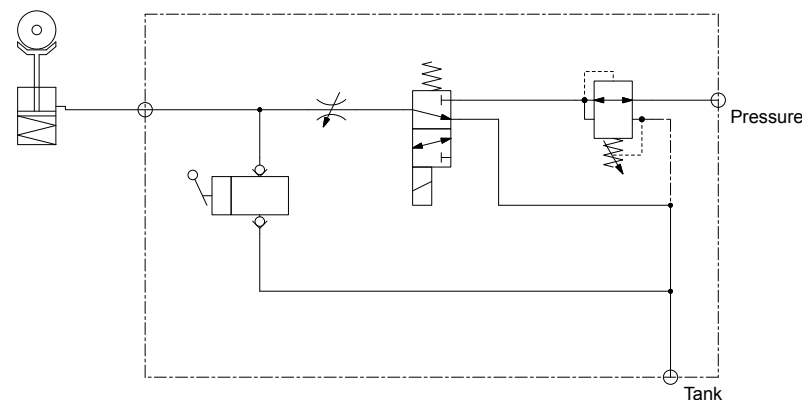


This simple brake circuit provides reduced pressure to power off the brakes.

### Typical Priority Flow Circuit



### Alternative Brake Circuit

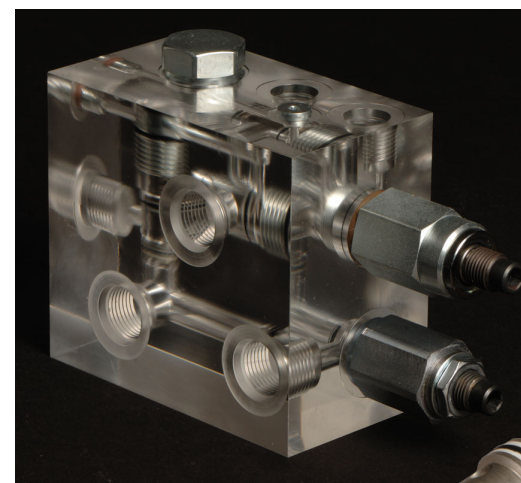
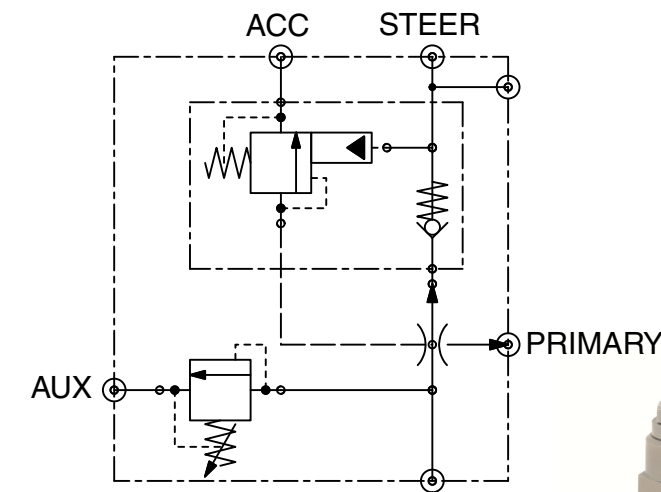


This circuit uses a solenoid valve to provide hydraulic pressure to power off the brake, a needle valve to control how quickly the brake is applied and released, and a hand pump to allow emergency braking.

### Space-Saving Priority Control for Braking ...

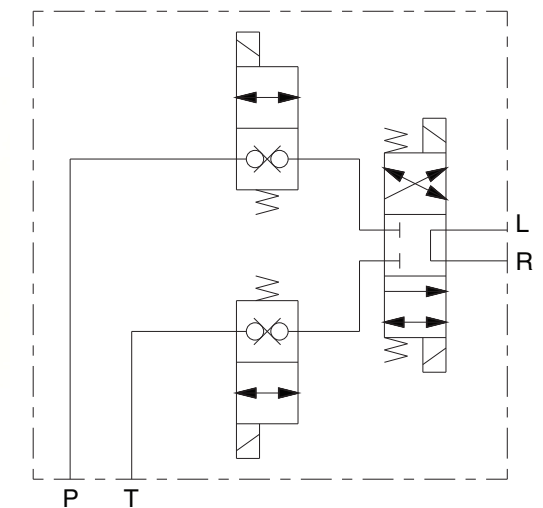
Space-saving solution uses the multi-function UPCV and FR valves with a high pressure relief valve for a total of three valves in the manifold.

The UPCV valve is a piloted pressure unloading valve with an integrated check valve. The FR valve is a pressure-compensated flow regulator. The circuit below depicts how these two valves work together in a manifold.



### ... and Dynamic Steering

A steering mode selector valve with secondary lockouts is an efficient way to control steering on a telehandler.



This space-saving manifold uses two multi-function valves. The ventable FR valve (located in the top of the manifold and pictured below it) sends priority flow to an accumulator that, once charged, assures adequate pressure at all times for the brakes. Once the accumulator is charged, the UPCV valve (pictured at left) automatically unloads the pressure to make it available for other machine functions.

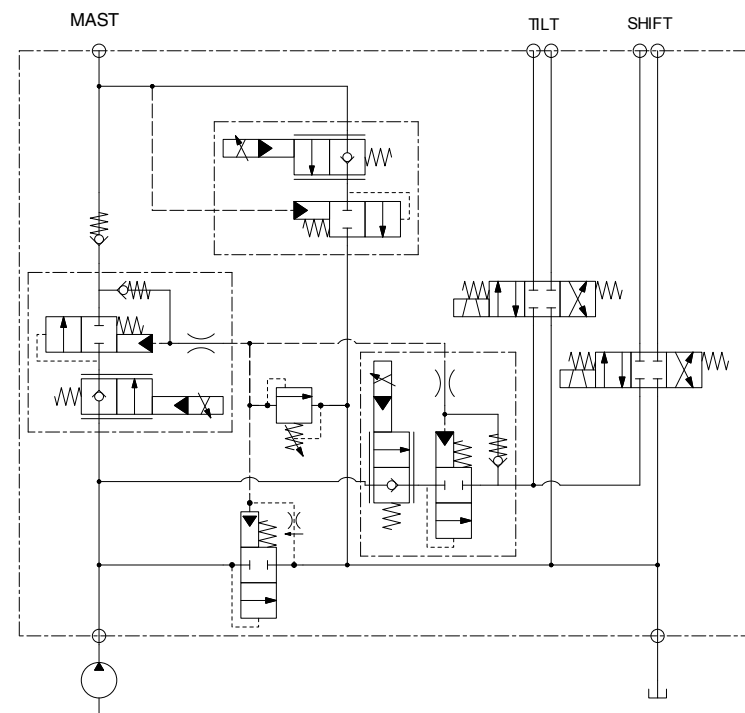
# FULL SYSTEM CONTROLS

Electronics  
Integrated with  
Hydraulics

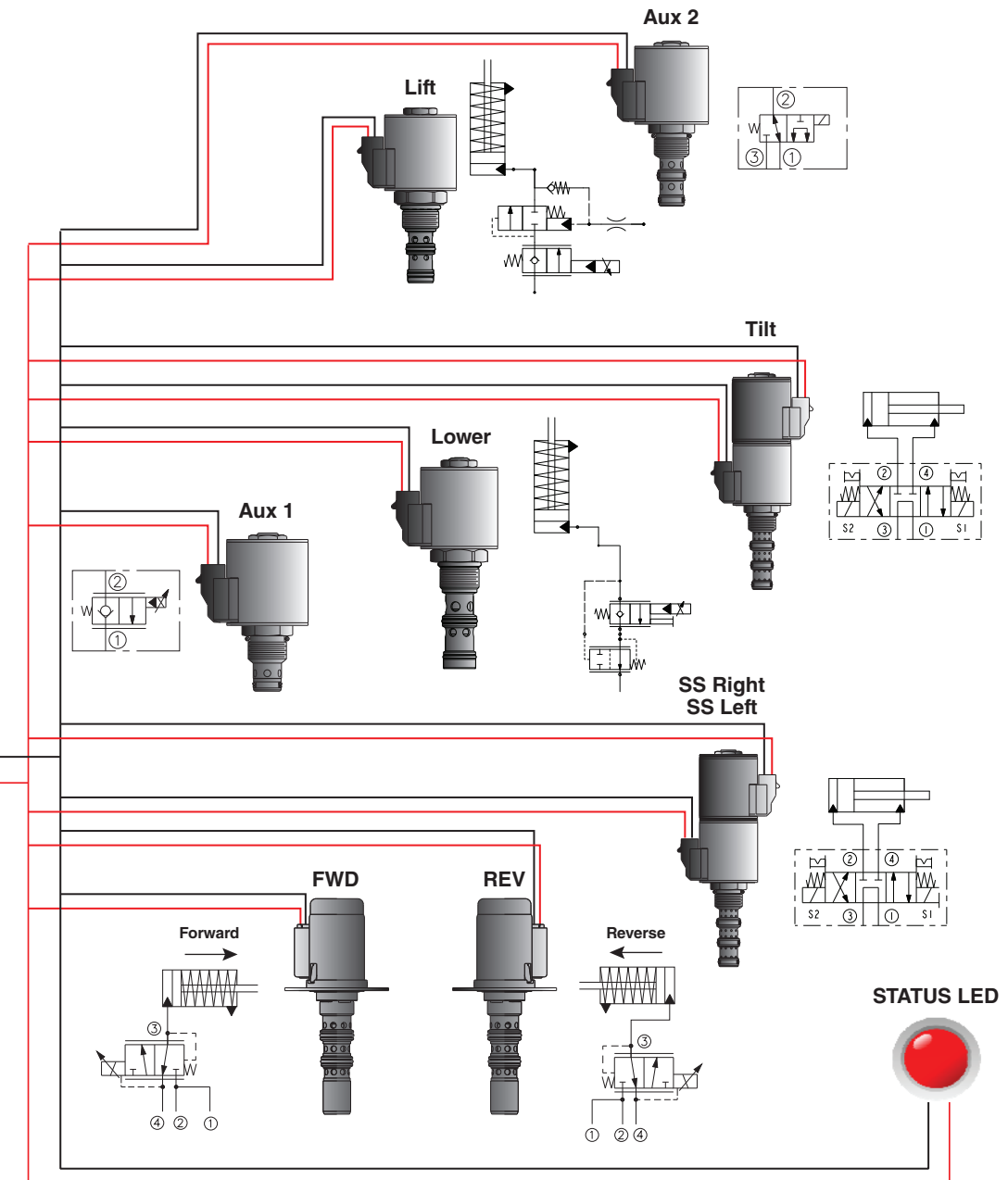
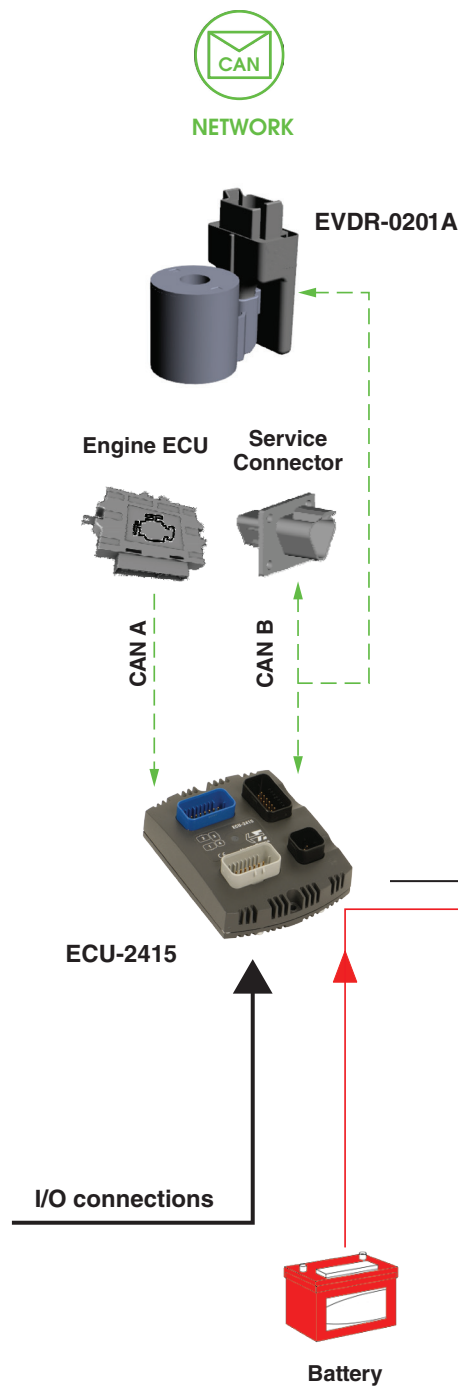
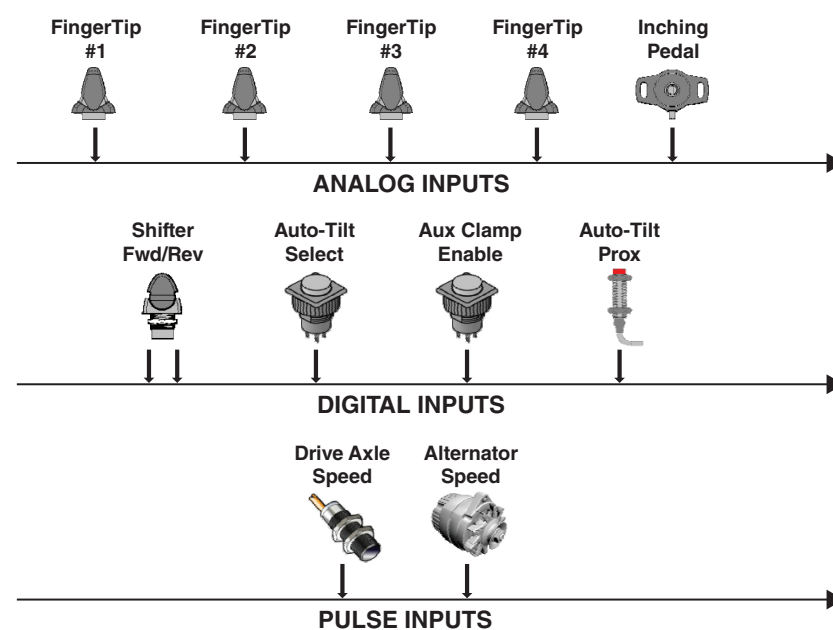
Full system controls involving the integration of electronics and hydraulics can make telehandlers and forklifts easier to operate. Whether your equipment needs just one more input or output for an attachment, or more fully integrated controls, HydraForce has the range of electrohydraulic options to suit your needs.

Integrating electronics doesn't have to be expensive or complex. Free programming software is available from [www.hydraforce.com](http://www.hydraforce.com) and libraries of pre-programmed functions, such as lift/lower and tilt/reach are available upon request from the HydraForce Electronics Support team. In many cases, by incorporating just a single electronic control unit, you can simplify several control functions. Your system can be designed with the flexibility to add more controls later.

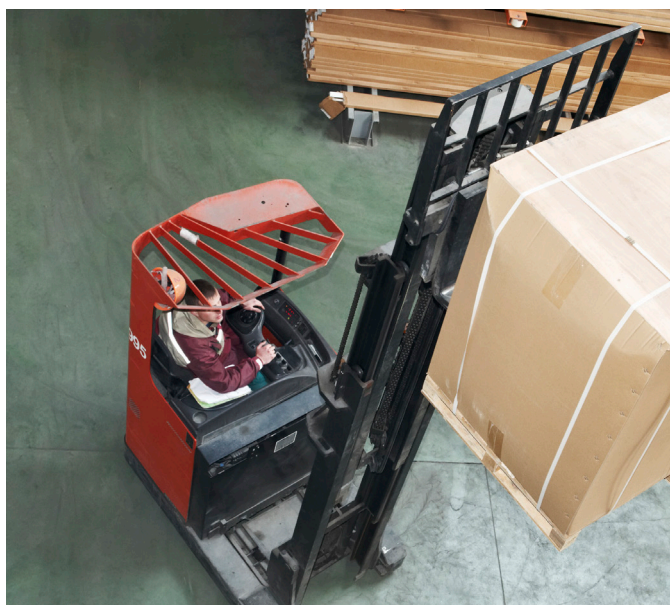
The use of higher flow electroproportional valves is another easy way to gain greater control of multiple machine functions. With greater flow, you can develop a flow-sharing scheme with the flexibility to handle auxiliary and priority functions.



Flow-sharing with higher flow cartridge valves can provide full system control for lifting, lowering and auxiliary functions.



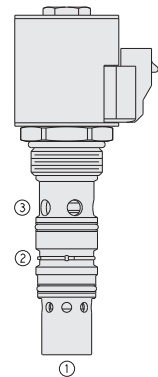
This diagram depicts a fully integrated electrohydraulic control system. Inputs and outputs are controlled by a single ECU-2415.



By incorporating just a single electronic control unit, you can simplify several control functions for a forklift or telehandler.

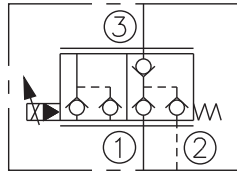


# VALVES AND ELECTRONIC CONTROLS



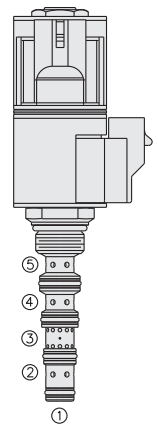
## SPCL16-30

Proportional Directional Control, 4-Port, Normally Closed with Check Isolated Load Sense



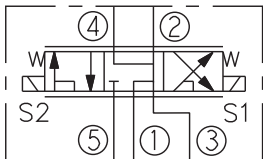
**Flow:** Up to 152 lpm/40 gpm  
**Pressure:** 250 bar/3625 psi

U.S. Patent 7,921,880

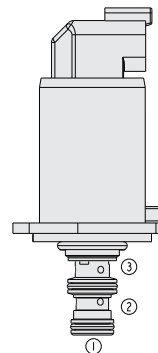


## SP08-58D

5-Way Proportional Valve with Integral Load Sense Port

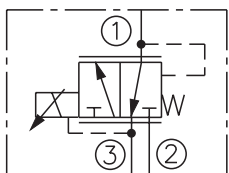


**Flow:** From 13 lpm/3.5 gpm to 30 lpm/8 gpm  
**Pressure:** 240 bar (3500 psi)



## EHPR98-G3x

Proportional, Reducing / Relieving, Drop-in



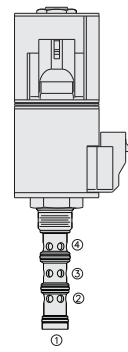
**Flow:** 4-6 lpm/1-1.4 gpm  
**Pressure:** 20-30 bar (290-435 psi)

### Our Breadth of Product

As the largest manufacturer of hydraulic cartridge valves in the world, HydraForce offers an extensive range of solenoid, electro-proportional, directional, flow, and pressure control valves, including many high pressure and multi-function models. Cartridge valves for flow rates up to 570 lpm/150 gpm and operating pressures up to 350 bar/5,000 psi are sold individually, with housings or in manifold blocks. Valves can be custom-designed or standard product.

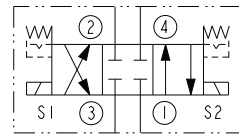
HydraForce designs, manufactures and supports valve, manifold and electro-hydraulic control products for heavy duty mobile and industrial equipment.

To request a free hydraulic integrated circuit consultation, please visit:  
<http://info.hydraforce.com/Free-Custom-Circuit-Consultation/>



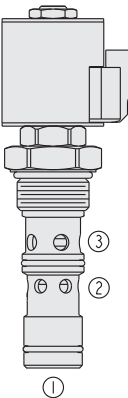
## HSV12-47C

High Pressure Solenoid, Direct-Acting, Spool Type, 4-Port, 3-Position



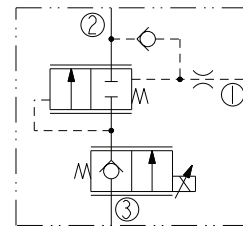
**Flow:** 57 lpm/15 gpm  
**Pressure:** 350 bar (5075 psi)

U.S. Patent 8,253,063

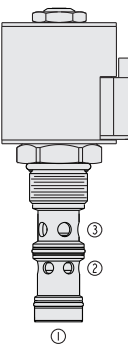


## HSPECxx-30x

Proportional Flow Control Valve with Integral Post-Pressure Compensator

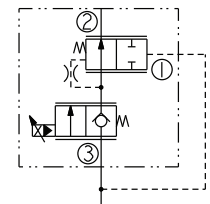


**Flow:** Up to 132 lpm/35 gpm  
**Pressure:** 350 bar (5075 psi)



## HSPECxx-34

Proportional Flow Control Valve with Integral Compensator



**Flow:** Up to 106 lpm/28 gpm  
**Pressure:** 350 bar (5075 psi)

## CORETEK™ Programmable Machine Controllers

It's easy to add electronic control to your hydraulic application with the HydraForce CoreTek line of electronic control units (ECUs) and electronic valve drivers (EVDRs).

CoreTek electronic controllers are tough to the core -- designed to withstand the environmental demands of mobile, off-highway equipment applications. With flexible input and output configuration, CoreTek controllers can easily be customized for a wide variety of applications, including fan control, transmission and timed control applications, and more.



## EVDRs - Electronic Valve Drivers

EVDRs are compact, economical and reliable electronic drivers for proportional solenoid valves. They mount directly onto the solenoid coil and are configurable using *HF-Impulse* software on a computer and serial cable or CAN to USB adapter.

### EVDR-0101A

One input and one output. Input can be accepted from analog or digital operator interface devices.

### EVDR-0201A

One or two outputs and one input that can be accepted from analog or SAE J1939 operator interface devices.

### COMING SOON - ECDR-0506A

Features six configurable inputs and five PWM outputs. This larger valve driver will be able to provide precise, repeatable control of four proportional valves and one on/off solenoid. The LED signal provides quick status check. The ECDR-0506A is CAN capable with CANopen and SAE J1939 protocols.

## HF-Impulse Configuration Software

HydraForce has developed an easy-to-use configuration platform - *HF-Impulse*, available for free download from the HydraForce Electronics Portal at [www.hydraforce.com/electronics](http://www.hydraforce.com/electronics). *HF-Impulse* allows you to flash devices with the latest firmware and configure all parameters for operation. You can configure any CoreTek electronic controller using *HF-Impulse*.

## ECUs - Electronic Control Units

### Model ECU-2415

Up to 39 digital, pulse, current measuring feedback and analog inputs along with 24 outputs consisting of up to 24 PWM or digital high-side drivers.

### Model ECU-2820

Up to 52 inputs and 28 outputs consisting of up to 24 PWM or digital high-side drivers and up to four digital low-side drivers.

### Model ECU-0809

Features 8 flexible sourcing outputs, 9 flexible inputs, and 4 feedback inputs. This controller is built on a powerful 32-bit microprocessor and features a diagnostic indicator, unlimited F-RAM and CAN capability..



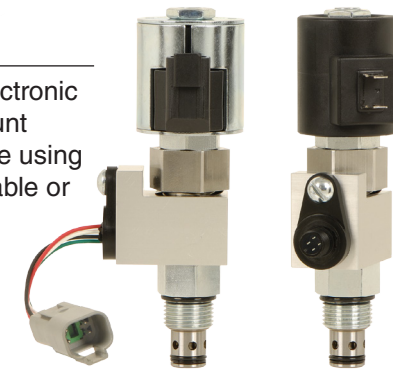
ECU 2415 and 2820



ECU 0809

## Sensor Valves

Select HydraForce valves can be ordered with an integral position sensing option capable of transmitting an on or off signal. This new sensing solution was designed for interchangeable use with existing HydraForce cartridge valves, is compatible with manual override options and uses an industry standard cavity.



## Heavy Duty Sensors

HydraForce has accurate sensors designed for off-road applications.

Our temperature sensors are thermistor style with padded resistors.

**ERT 120 – Output Signal:** 5427.9 to 436.3 ohms

Our pressure sensors have 1% total error band accuracy, are IP67 rated.

**ERP035 –** for pressure ranges up to 35 bar (500 psi)

**ERP414 –** for higher pressures up to 414 bar (6000 psi)

# OUR STORY

## Our Story

The HydraForce story began in 1985 when the company was founded near Chicago by several partners who saw the mobile equipment industry's need for quality hydraulic cartridge valves and manifolds delivered in a timely and responsive manner. They also saw the potential for engineering innovation and design flexibility offered by cost-effective and space-saving cartridge valves and hydraulic integrated circuits.

Since its founding, HydraForce continues to be a privately held company as it has grown to several manufacturing locations in North America, Europe and Asia, with a network of 120 stocking distributors who can offer local support across the globe.

To maintain our core competency of speed to market, HydraForce has invested in application technical support tools including i-Design, our free hydraulic system design software, which integrates seamlessly with 3rd party simulation software, monthly webinars on new products and application tips, and an online product catalog.

All HydraForce products carry a five-year limited warranty against defects in material and workmanship.

## HydraForce Vision

To Be An Independent Provider Of Innovative Technical Solutions That Can Change The World

## Mission Statement

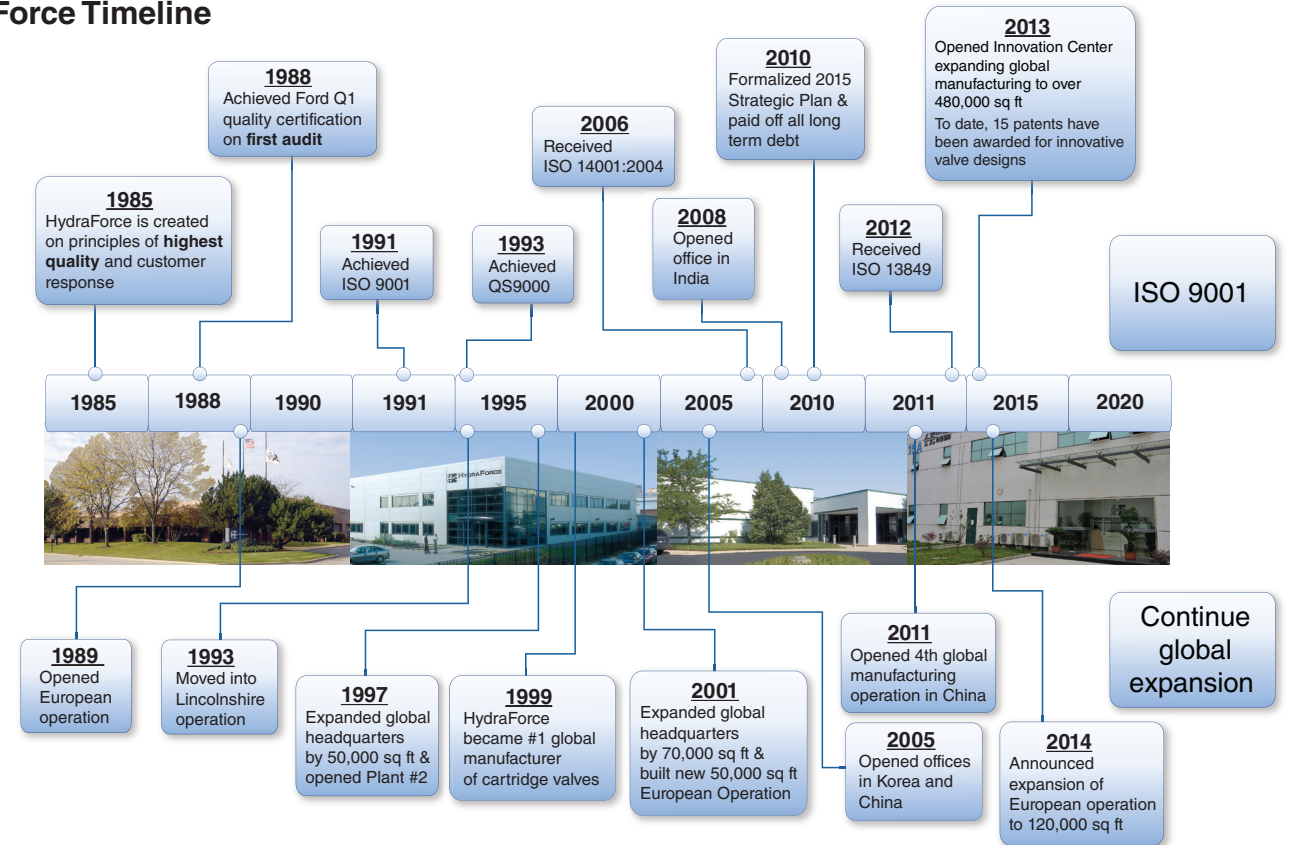
To Provide Our Customers With The Highest Quality Hydraulic Valves And The Most Responsive Customer Support In The World

## Our Quality and Manufacturing Guarantee

All three HydraForce plants in North America, Europe and Asia follow the same manufacturing processes and standards to ensure global consistency in product quality.

- All products 100% tested
- Use of Lean and Six Sigma practices
- New product introduction tools such as:
  - Advanced Product Quality Planning (APQP)
  - Production Part Approval Process (PPAP)
  - Failure Mode and Effect Analysis (FMEA)
  - Statistical Process Control (SPC)
- Continuous improvement through Kaizen
- Responsive delivery with Kanban throughput system

## HydraForce Timeline



## Worldwide Support

